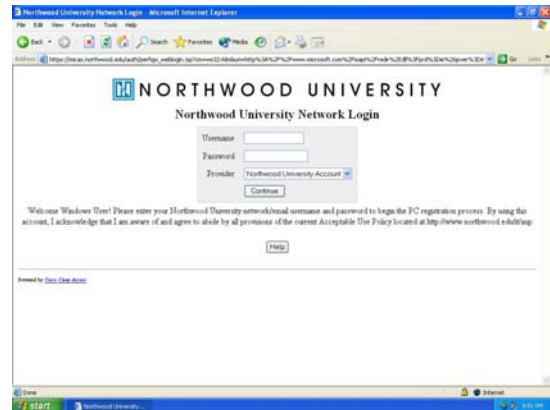


Northwood University Computer Registration Documentation Non-Windows Platforms

Macintosh and OSX Computers

1. Unpack and setup your computer. Connect your computer to the network using either a wireless network card or by plugging your network card into one of the network jacks using a Category 5 Ethernet cable. Ethernet cables can be purchased at the bookstore. Please note that you must connect your computer through a network card (wired or wireless), not your modem and a phone line.
2. Power on your computer. Start a web browser and try to visit a web page. You should be redirected to the initial login page shown to the right. Login using your Northwood University network/email account (not your my.northwood.edu account) and click **'Continue'**.
3. After logging in, you should see a page similar to the one to the right. Congratulations, you have been successfully registered on the Northwood network.



Northwood University Network Login

[Logon Information]

You have been successfully logged on the network.

- <http://livepage.apple.com/>
- Time Logged on: 08/11/05 00:20:12
- User Session: unlimited

[Logout Information]

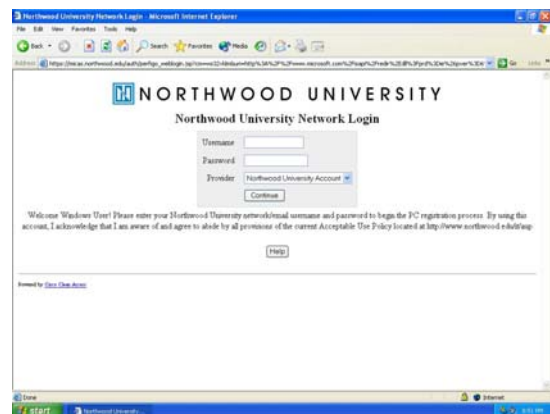
To log yourself off the network, please click on the **logout** button.

(Note: If you have an active VPN session, please remember to disconnect the VPN connection.)

Logout

Windows CE and Palm Devices

1. Connect your Windows CE or Palm device to the wireless network and start a web browser session. You should see the login screen to the left. Login using your Northwood University network/email account (not your my.northwood.edu account) and click **'Continue'**.



2. After logging in, you should see a page similar to the one to the right. Congratulations, you have been successfully registered on the Northwood network.

Northwood University Network Login

[Logon Information]

You have been successfully logged on the network.

- <http://livepage.apple.com/>
- Time Logged on: 08/11/05 00:20:12
- User Session: unlimited

[Logout Information]

To log yourself off the network, please click on the **logout** button.

(Note: if you have an active VPN session, please remember to disconnect the VPN connection.)

Logout

Game Consoles (Playstation 2, XBOX, and Gamecube) and DVRs (Tivo and ReplayTV)

All game consoles and DVRs must be manually registered before being able to use the Northwood network. Students must bring their game console or DVR to the Help Desk to have it registered. Phone registrations can not be taken.

Linux, Unix and FreeBSD Machines

All Linux, Unix and FreeBSD machines must be manually registered before being able to use the Northwood network. Students must bring their Linux, Unix, and FreeBSD computers to the Help Desk to have them registered. Phone registrations can not be taken.