

Connecting Your S: Drive to Your Home PC Using Windows XP

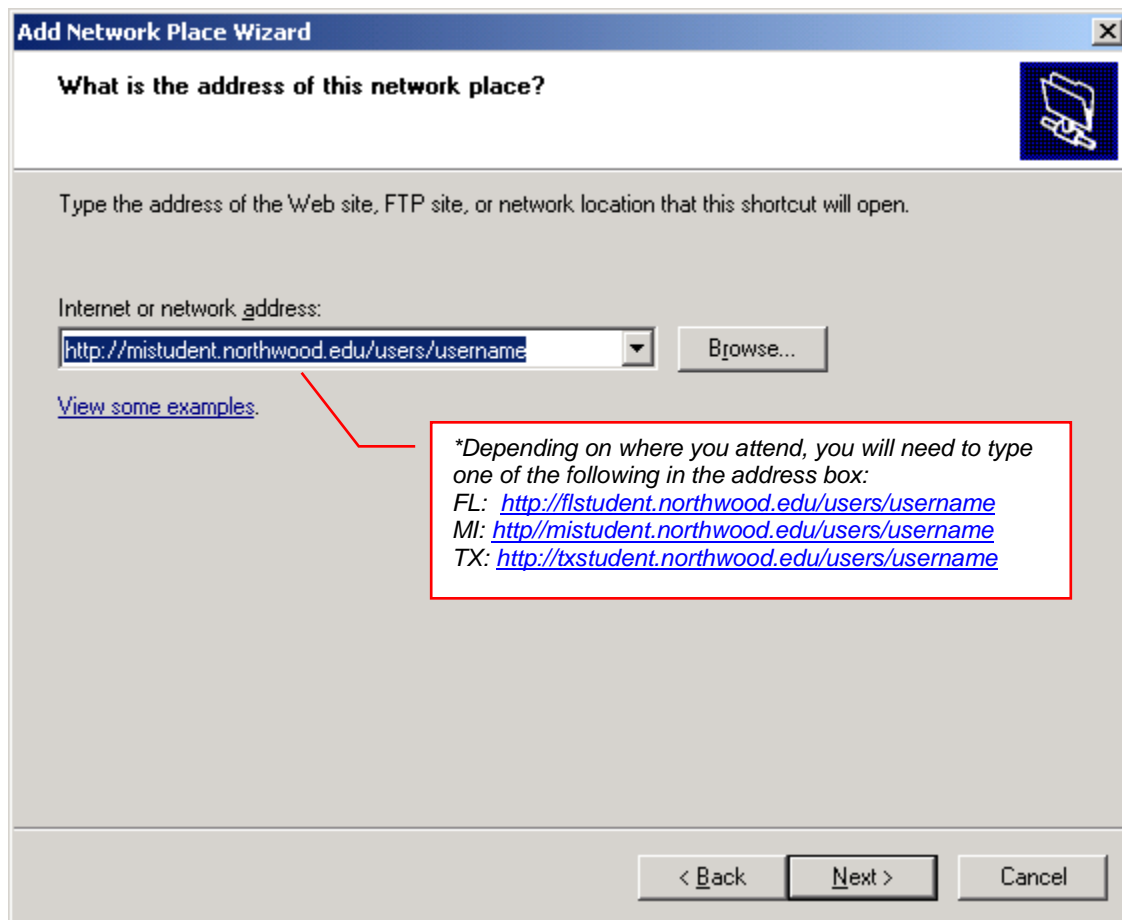
*******(This service is available for faculty and students only)*******

Go to “My Network Places”

Click on “Add Network Place” and click next

Select “Choose another network location” and click next

You should see the following screen *:

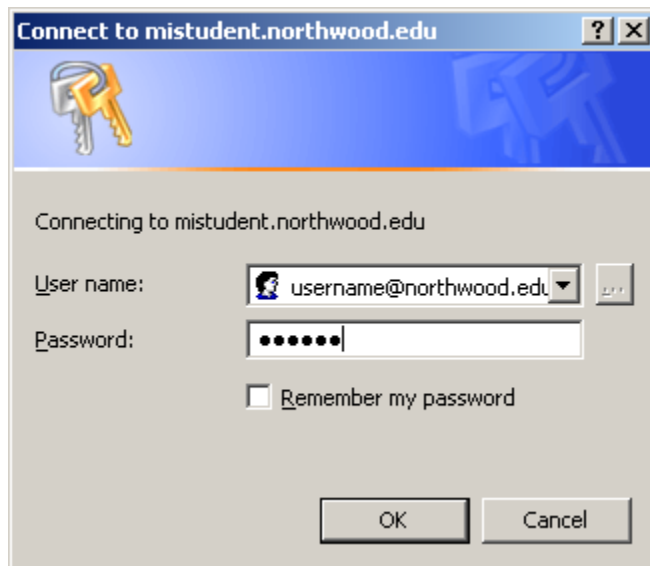


*Substitute the word username with your username.

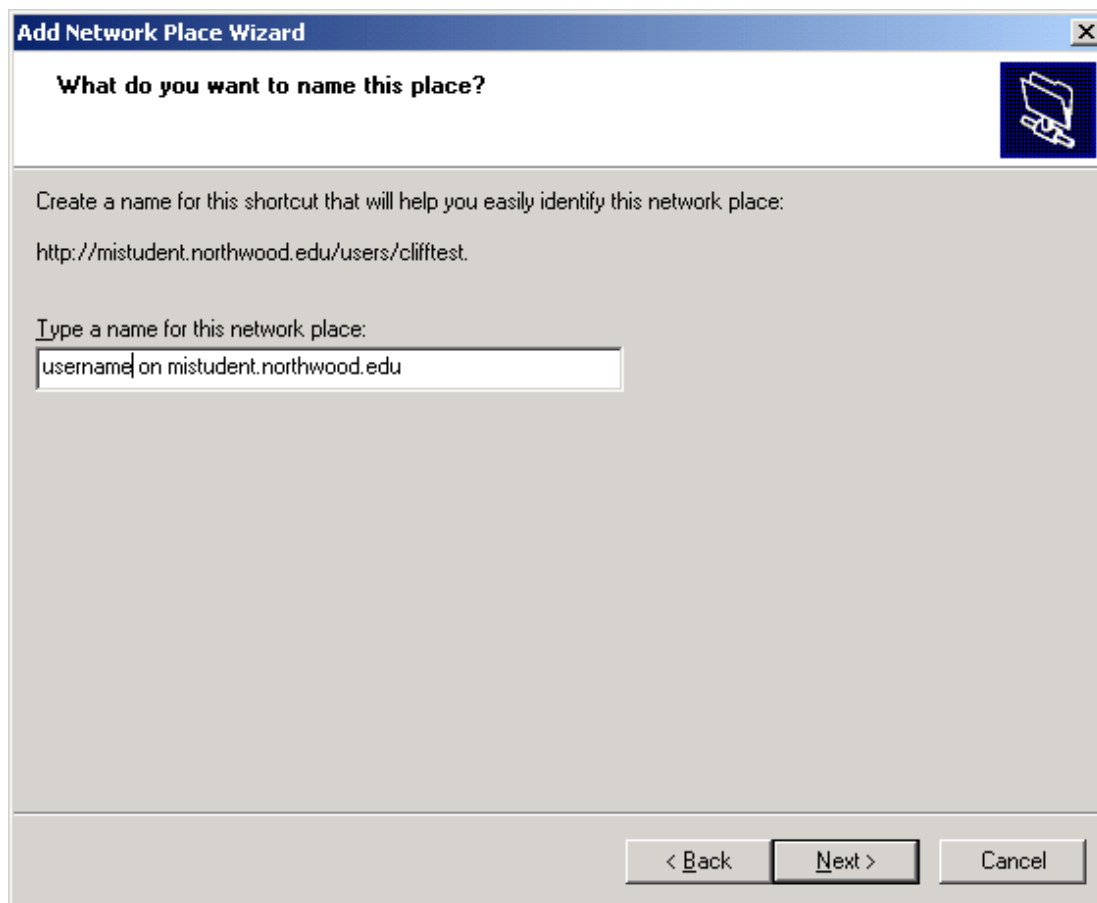
*Faculty: replace the word users with faculty so the address looks similar to this: <http://mistudent.northwood.edu/faculty/username>

When done click the *Next >* button.

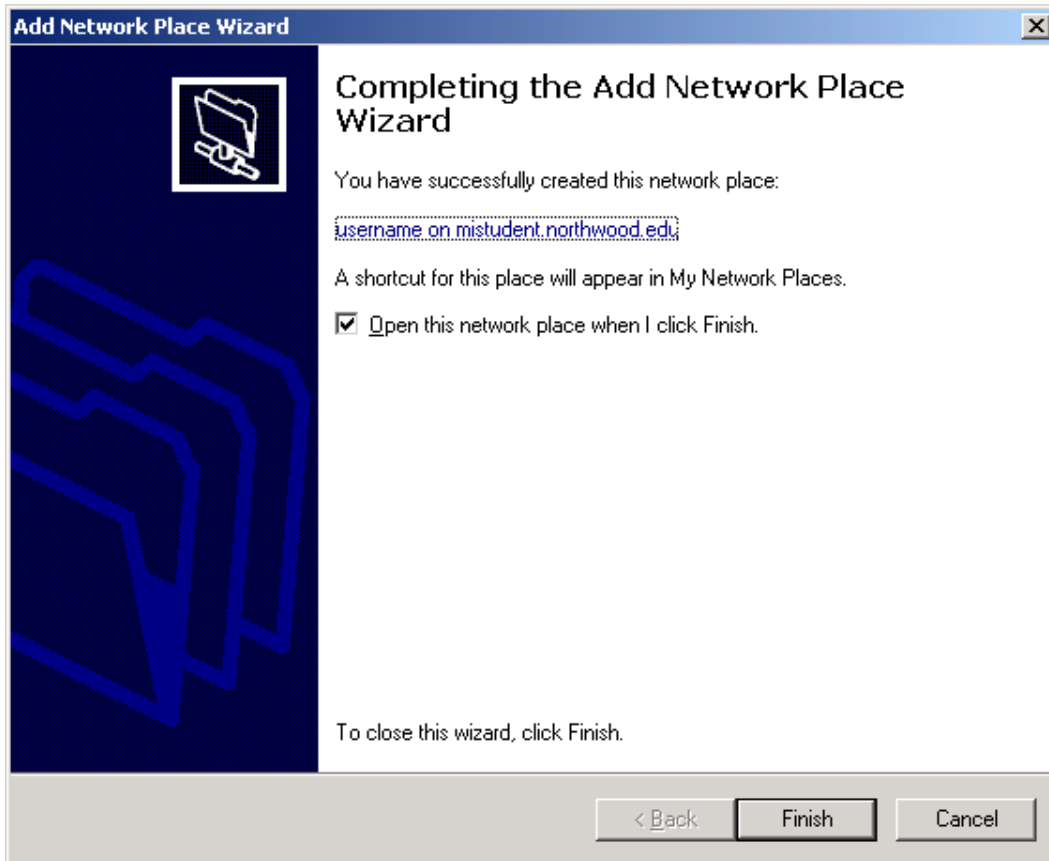
Fill in username and password as it shows below. If this doesn't work, type in Northwood/username and then enter your password. You should **not** click on "Remember my password". Click "ok" when finished.



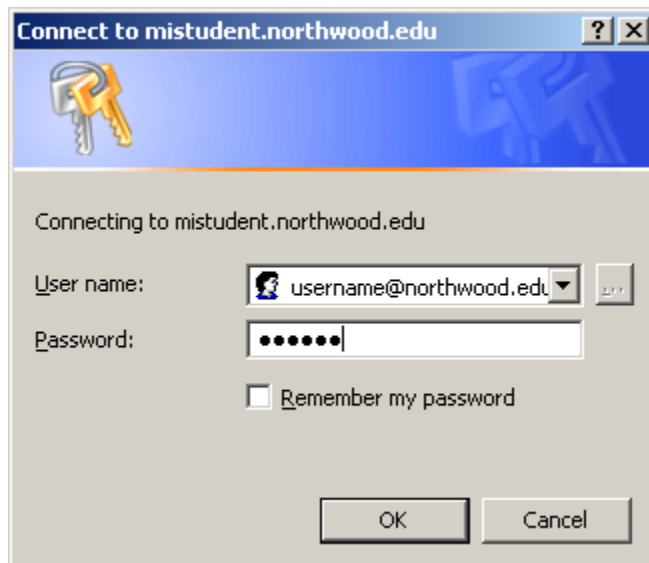
This next screen is the name of the share that will be created for you in your network places. Remember what it says so that you can find it later.



Click "Finish" on this screen.



You have to logon one last time, to verify permissions.



When you are done you should have a new folder in "My Network Places" that is pointed to your user Northwood University S Drive.