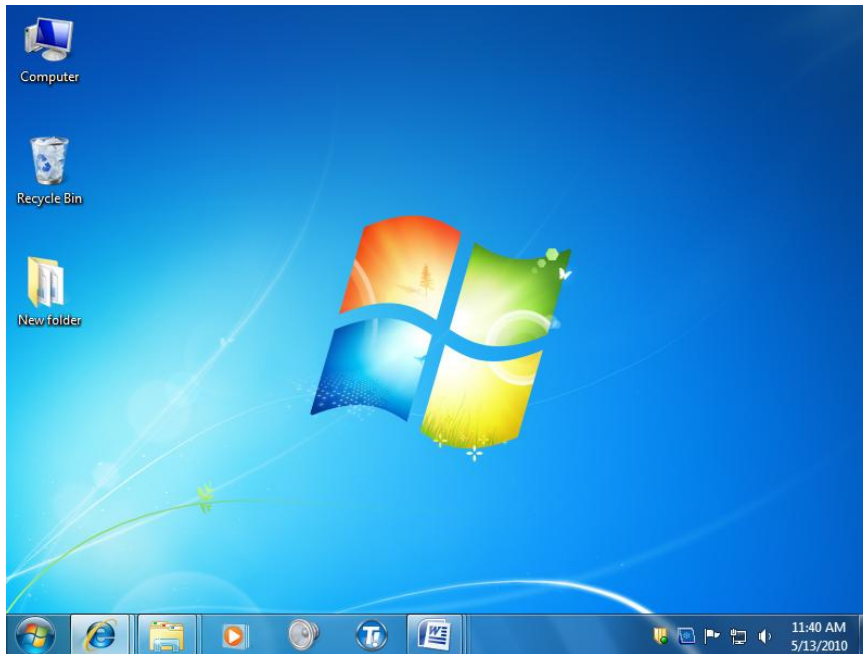


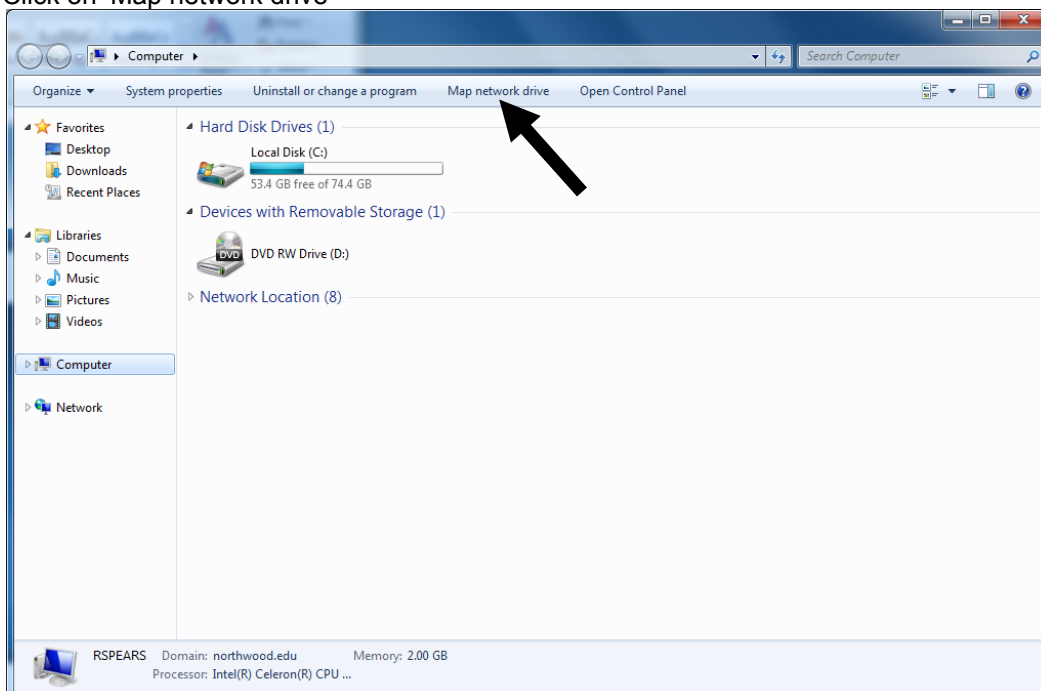
How to Connect Your S: Drive From Home using Windows 7

*******(This service is available for faculty and students only)*******

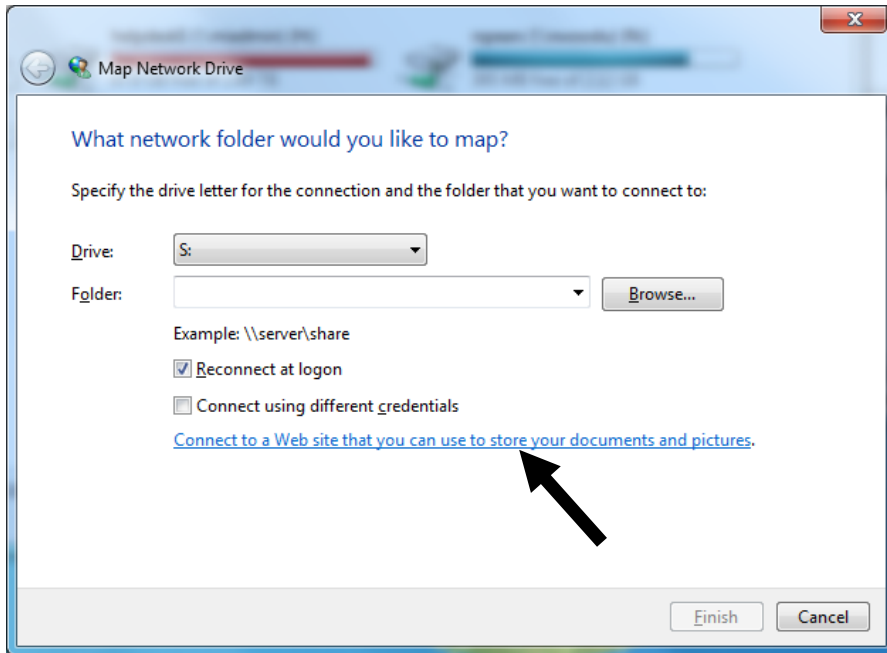
- Double-click on the 'Computer' icon on the desktop



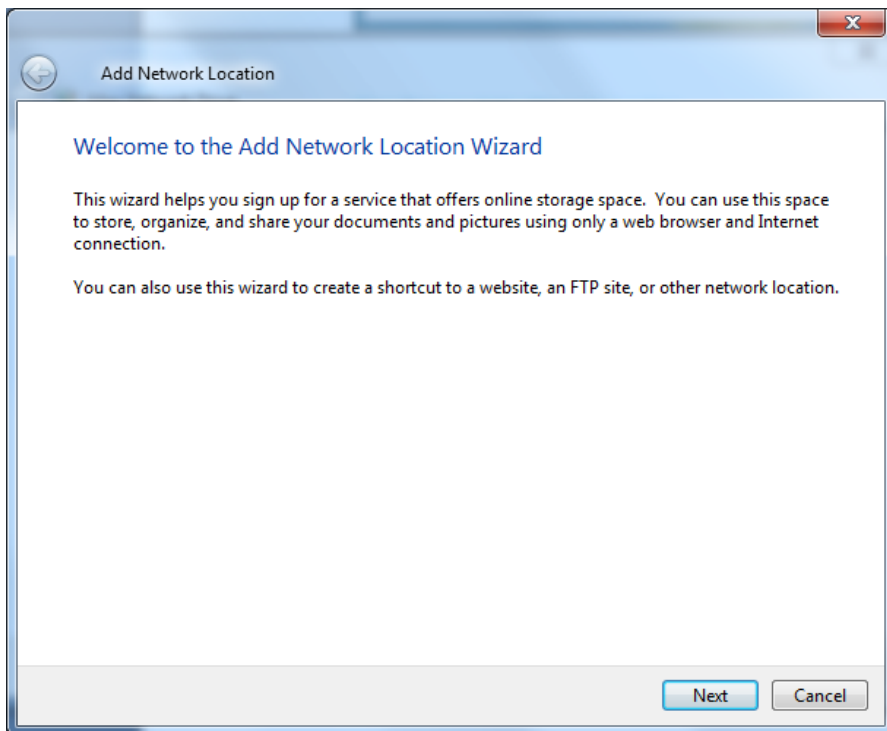
- Click on 'Map network drive'



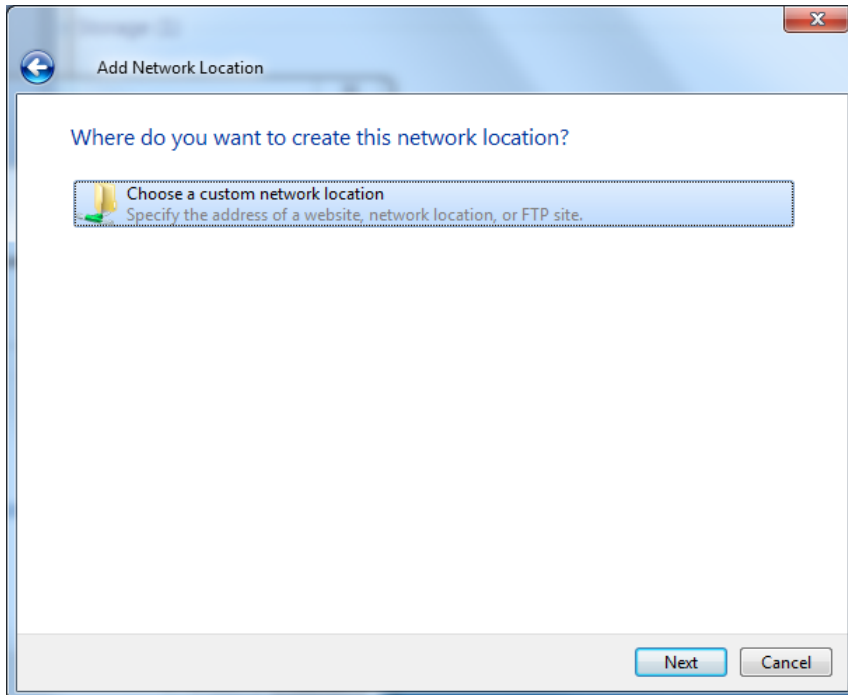
- Click on [Connect to a Web site that you can use to store your documents and pictures](#) link



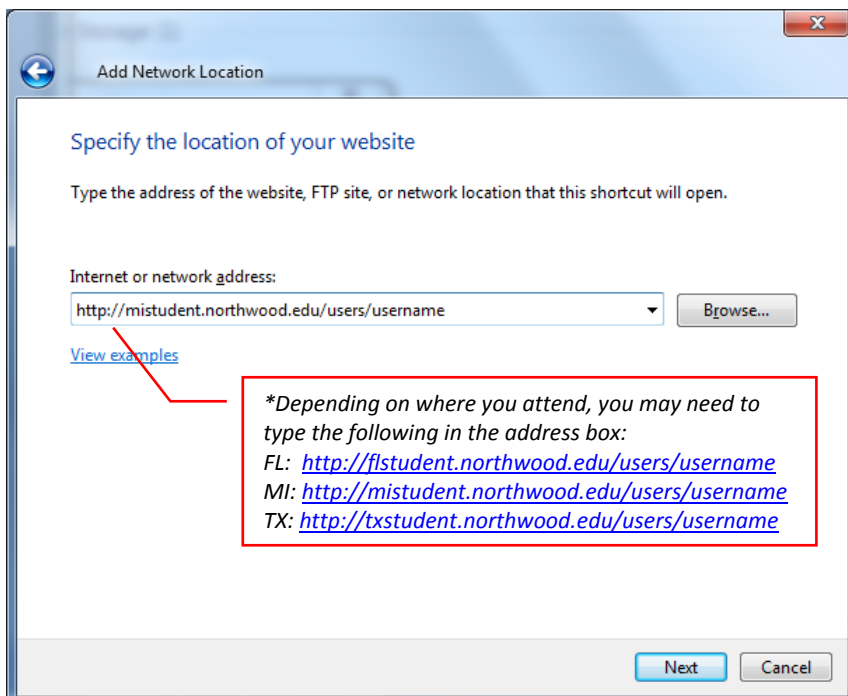
- Click 'Next' to Add a Network Location



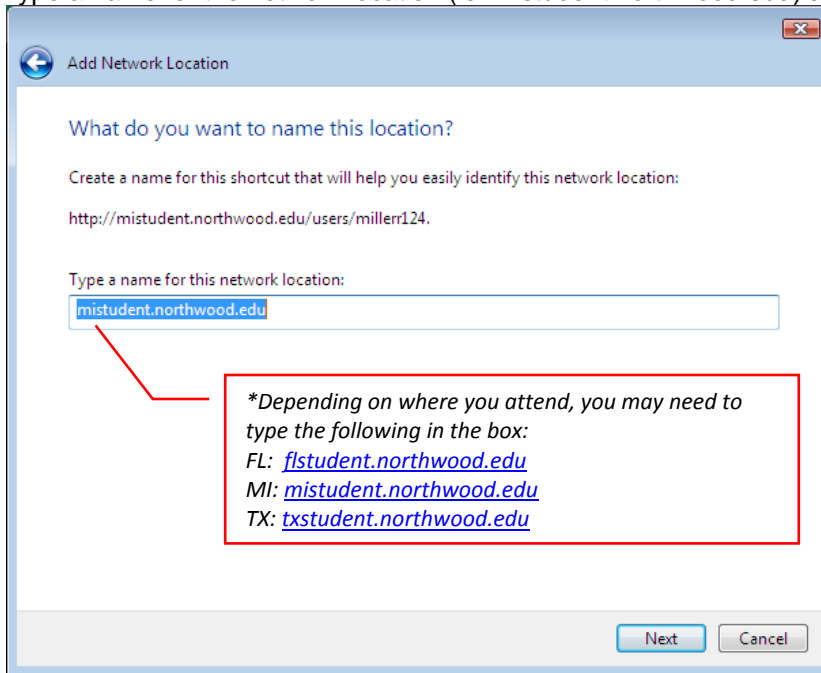
- Select 'Choose a custom network location' and click 'Next'



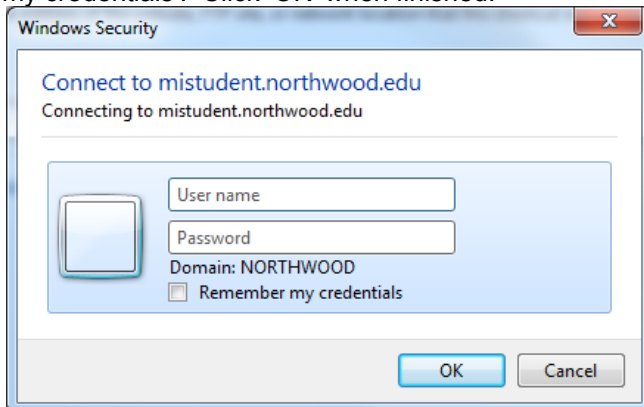
- *Type <http://mistudent.northwood.edu/users/username> in the address box and click 'Next'
 - *Faculty: *replace the word users with faculty.*
 - *Replace the word username with your username.



- Type a name for the network location (ie. mistudent.northwood.edu) and click 'Next'.



- Type your Northwood username and password in the corresponding boxes. You should **not** click on 'Remember my credentials'. Click 'OK' when finished.



- Click 'Finish'

