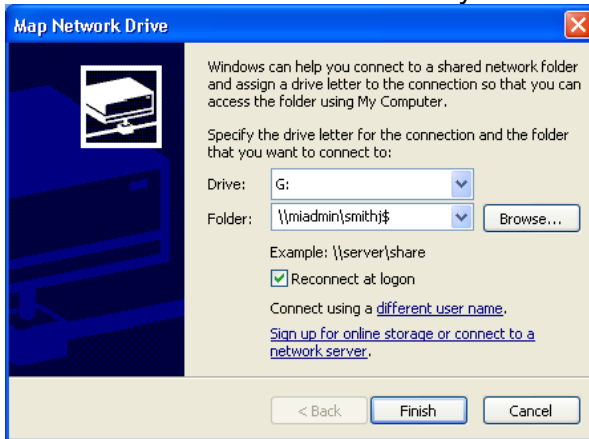


How to Map A Network Drive

- You will need the file path for the drive you want to map (Ex: for your S drive the file path would be `\\miadmin\username$`. Replace the word username as your NU username.)
- Right Click on the My Computer icon
- Click on Map Network Drive
- In the Map Network Drive box select a drive letter from the drop down list



- Click in the white Folder box to insert a cursor
- Type in the file path
 - File path must be typed exactly as was created
 - Use slash above enter key
 - Drive letter cannot already be in use by another drive



- Click Finish
- If the drive was mapped correctly it will immediately open
- An Error message will appear if drive was mapped in correctly